

Room Directory

Last Updated: 23/10/24

The room directory is a full list of spaces on campus available for student groups to book. All bookings are subject to availability and must go through the [event notification form](#).

If a space is not on this list then it can not be booked through the Students' Union or is not available out of hours.

The following buildings are available during daytime only (9am-5pm):

- George Davis Centre
- Fielding Johnson Building

The following spaces must be booked by another department:

- Sports Halls and Facilities (Through sports@le.ac.uk)
- Law School Council Chambers (Through the Law Reception)
- Attenborough Arts Centre (Through [this link](#))

The following buildings are closed throughout the year for essential maintenance:

- Charles Wilson Building (apart from the ground floor)
- Bennett Building
- Physics Building

Room Directory - Performance Spaces

Multi Use Space (3.13) - Percy Gee Building



Capacity: 120
Mirrors: Yes, Fixed
Furniture: None (On Request Only)

Global Lounge (Ground Floor) - Charles Wilson Building



Capacity: 200
Mirrors: None
Furniture: As Shown, Cleared on Request

Gee's (0.10) - Percy Gee Building



Capacity: 250
Mirrors: Yes, Portable
Furniture: As Shown, Cleared on Request

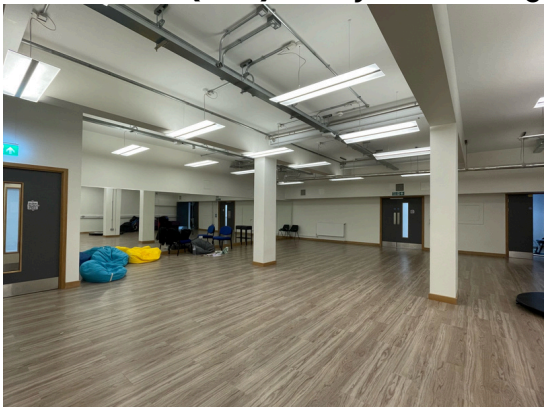
Union Studio (0.13) - Percy Gee Building



Capacity: 70
Mirrors: Yes, Portable
Furniture: None (On Request Only)

*Capacity alters depending on portering requests and furniture.

Dance Studio (-1.04) - Percy Gee Building



Capacity: 100
Mirrors: Yes, Fixed
Furniture: None (On Request Only)

SU Square (0.12) - Percy Gee Building



Capacity: 300
Mirrors: None
Furniture: As Shown, Cleared on Request

Room Directory - Small Seminar Rooms (Under 50 cap)

324 - Ken Edwards Building



Capacity: 30

322 - Ken Edwards Building



Capacity: 40

528 - Ken Edwards Building



Capacity: 36

526 - Ken Edwards Building



Capacity: 40

526 - Ken Edwards Building



Capacity: 40

Training Room 2.23 - Percy Gee Building



Capacity: 30

001 - Attenborough Building



Capacity: 42

002 - Attenborough Building



Capacity: 40

111 - Attenborough Building



Capacity: 48

208 - Attenborough Building



Capacity: 48

210 - Attenborough Building



Capacity: 32

211 - Attenborough Building



Capacity: 24

Room Directory - Small Seminar Rooms (Under 50 cap)

1.04 - Sir Bob Burgess



Capacity: 42

2.03 - Sir Bob Burgess



Capacity: 48

2.05 - Sir Bob Burgess



Capacity: 24

2.06 - Sir Bob Burgess



Capacity: 24

2.07 - Sir Bob Burgess



Capacity: 42

2.08 - Sir Bob Burgess



Capacity: 30
(same layout as 2.07 but no photo available)

Room Directory - Large Seminar Rooms (Over 50 cap)

0.02 - Sir Bob Burgess



Capacity: 84

0.03 - Sir Bob Burgess



Capacity: 72 (same layout as 0.02 but no photo available)

1.01 - Sir Bob Burgess



Capacity: 84 (same layout as 0.02 but no photo available)

1.02 - Sir Bob Burgess



Capacity: 78

1.03 - Sir Bob Burgess



Capacity: 66

2.04 - Sir Bob Burgess



Capacity: 60

Room Directory - Small Lecture Theatres (Under 160 cap)

LT3 - Attenborough Building



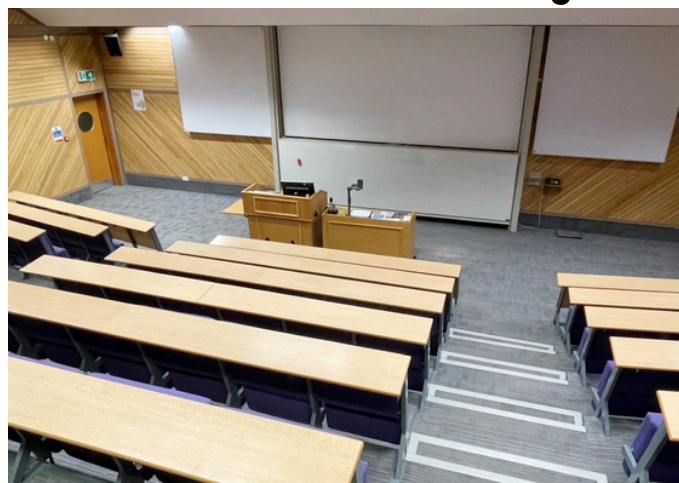
Capacity: 96

LT2 - Ken Edwards Building



Capacity: 158

LT3 - Ken Edwards Building



Capacity: 150

Room Directory - Large Lecture Theatres (Over 160 cap)

LT1 - Attenborough Building



Capacity: 204

LT1 - Ken Edwards Building



Capacity: 250

Lecture Theatre - Rattray Building



Capacity: 329

LT1 - Sir Bob Burgess



Capacity: 600

LT2 - Sir Bob Burgess



Capacity: 250

Room Directory - Meeting Rooms

Board Room 3.01 - Percy Gee Building



Capacity: 20

104 - Attenborough Building



Capacity: 12

109 - Attenborough Building



Capacity: 12

Room Directory - Other

101/103 - Ken Edwards Building



Capacity: 35
Computer Room

323 - Ken Edwards Building



Capacity: 27
Computer Room

Film Theatre - Attenborough Building



Capacity: 133
Film Theatre