

# School of

# Accounting and Finance



COLLEGE REP



**Dimasha**

su-ulsbcollerep@le.ac.uk

SCHOOL REP



**Amrita Matharu**

am1278@student.le.ac.uk

SCHOOL REP



**Jessica Danquah**

jmd62@student.le.ac.uk

For more info contact:  
[su-repteam@le.ac.uk](mailto:su-repteam@le.ac.uk)

## Accounting

Year 1

**THIS POSITION IS VACANT**  
**IT COULD BE YOU!**  
Contact:  
[su-repteam@le.ac.uk](mailto:su-repteam@le.ac.uk)  
for more details

## Finance

Year 1

**THIS POSITION IS VACANT**  
**IT COULD BE YOU!**  
Contact:  
[su-repteam@le.ac.uk](mailto:su-repteam@le.ac.uk)  
for more details

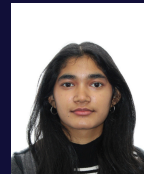
## Accounting and Finance

Year 1



**Aalok Gohil**

abg19@student.le.ac.uk



**Densha Baptistdias**

db560@student.le.ac.uk

Year 2



**Anushka Agarwalla**

aa1428@student.le.ac.uk



**Louie Ch'ng**

lcn12@student.le.ac.uk

## Accounting and Finance MSc



## Management, Finance and Accounting MSc

September Intake



**Maas Shaikh**

maas8@student.le.ac.uk

January Intake



**Rincy Alex**

rma28@student.le.ac.uk

Year 2

**THIS POSITION IS VACANT**  
**IT COULD BE YOU!**  
Contact:  
[su-repteam@le.ac.uk](mailto:su-repteam@le.ac.uk)  
for more details

Year 2

**THIS POSITION IS VACANT**  
**IT COULD BE YOU!**  
Contact:  
[su-repteam@le.ac.uk](mailto:su-repteam@le.ac.uk)  
for more details



**Esther Sodipe**

es483@student.le.ac.uk



**Tanya Chinamo**

dtc7@student.le.ac.uk



**Saloni Kewalramani**

spk26@student.le.ac.uk



**Sumina Gurung**

sg712@student.le.ac.uk

Year 3



**Amrita Matharu**

am1278@student.le.ac.uk



**Kazz Abdallah**

ka375@student.le.ac.uk

Year 3



**Justyna Barucha**

jb932@student.le.ac.uk

**THIS POSITION IS VACANT**  
**IT COULD BE YOU!**  
Contact:  
[su-repteam@le.ac.uk](mailto:su-repteam@le.ac.uk)  
for more details

**THIS POSITION IS VACANT**  
**IT COULD BE YOU!**  
Contact:  
[su-repteam@le.ac.uk](mailto:su-repteam@le.ac.uk)  
for more details

Year 3



**Kogul Kandiah**

kk424@student.le.ac.uk



**Malika Godil**

mtg11@student.le.ac.uk