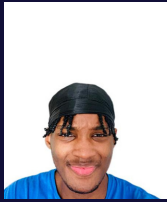


COLLEGE REP



Josh

su-cseccollegerep@le.ac.uk



School of Engineering PGT



For more info contact:
su-repteam@le.ac.uk

SCHOOL REP



Khadeejah Pirzada

kp426@student.le.ac.uk

SCHOOL REP



Samad Nawaz

sn380@student.le.ac.uk

Advanced Electronic Engineering

September Intake

January Intake



Raymond Mokolo

erm25@student.le.ac.uk

THIS POSITION IS VACANT
IT COULD BE YOU!
Contact: su-repteam@le.ac.uk for more details

THIS POSITION IS VACANT
IT COULD BE YOU!
Contact: su-repteam@le.ac.uk for more details

THIS POSITION IS VACANT
IT COULD BE YOU!
Contact: su-repteam@le.ac.uk for more details

Aerospace Engineering

September Intake

January Intake



Archana Sukumaran

asl619@student.le.ac.uk



Jeevan Kucherlapati

jvk4@student.le.ac.uk

Master of Engineering Management (MEM)

September Intake

January 2024 Intake

January 2025 Intake



Ajit Arjun Pawar

aap29@student.le.ac.uk



Chirag Ghodake

csg17@student.le.ac.uk



Babusurya Ganeshbabu

bg200@student.le.ac.uk



Suhas Mulukatte Kenchgowda

smk47@student.le.ac.uk

Advanced Mechanical Engineering

September Intake

January Intake



Rajashekhar Siliveri

rgs30@student.le.ac.uk



Huzaifa Muhammad

hm453@student.le.ac.uk



Christopher Uzoma

ceu3@student.le.ac.uk



Sunny Ajay Kumar

sak56@student.le.ac.uk

Embedded Systems and Control Engineering

September Intake

January Intake

THIS POSITION IS VACANT
IT COULD BE YOU!
Contact: su-repteam@le.ac.uk for more details



Amenze Osaze-Jesurobo

aaaj@student.le.ac.uk

Spacecraft Engineering

September Intake

January Intake



Jay Horton

jh968@student.le.ac.uk

THIS POSITION IS VACANT
IT COULD BE YOU!
Contact: su-repteam@le.ac.uk for more details

Advanced Mechanical Engineering with Management

September Intake

January Intake



Akshay Thummalapally

akrt1@student.le.ac.uk

THIS POSITION IS VACANT
IT COULD BE YOU!
Contact: su-repteam@le.ac.uk for more details

THIS POSITION IS VACANT
IT COULD BE YOU!
Contact: su-repteam@le.ac.uk for more details

THIS POSITION IS VACANT
IT COULD BE YOU!
Contact: su-repteam@le.ac.uk for more details